



# AV 871 Series

*Automatic Optical Inspection Machine*



*Precise  
Efficient  
User Friendly*

# AV 871 Series Off Line AOI Machine

AV 871 Series have been enhanced with Image Base and Algorithm Analysis for more precise inspection. Improved structure and hardware for operation stability, speed, user friendly, quality control and productivity.

## Machine Characteristics

Graphic User Interface, Simple Programming, Optimized Learning Mode, Real Time 'NG' Verification

## Functions

- Programming By CPL Data
- Realtime Process Control
- Bad Board Auto Skip
- Program Optimization
- Multi Master Images
- OCR Recognition
- Component Data Export
- SPC and Image Export
- Barcode Reader (Optional)
- Rework Station (Optional)

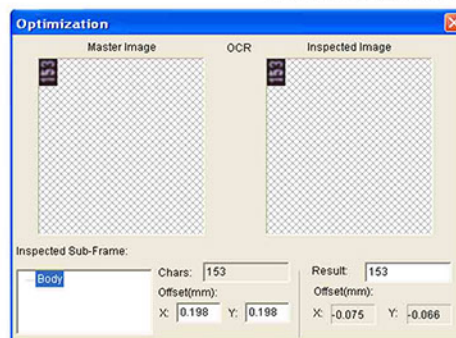
### Machine Graphic User Interface



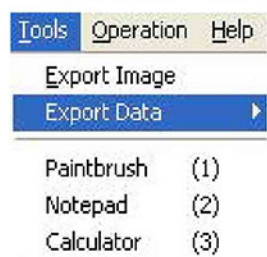
### Program Optimization



### OCR Recognition



### Data, Image Export







## Realtime Inspection Result

System instantly displays realtime 'NG' Data for verification.

## Performance

- Realtime Inspection Verification
- Stable PCB Holding Fixture
- Fast Tact Time
- Graphic User Interface
- Simple Programming
- Optimized Learning Mode
- Stable Structure
- Safety Light Curtain
- Minimum False 'NG' Detection
- Near 'Zero' Escape or Leak

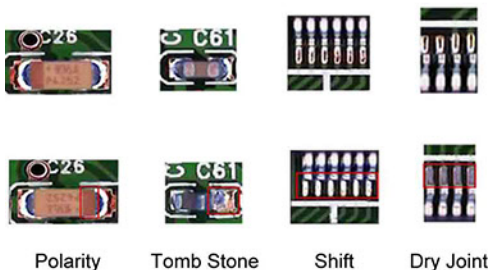
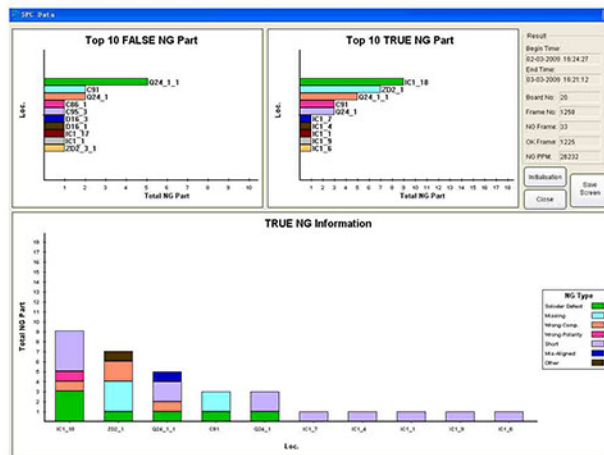
### NG Data



### Programming by Mounter Data

Column 1	Column 2	Column 3	Column 4	Column 5	Column 6
1	10.374	81.1970	90	1	
2	10.224	81.1970	90	1	
3	10.224	81.1970	90	1	
4	10.224	81.1970	90	1	
5	10.224	81.1970	90	1	
6	10.224	81.1970	90	1	
7	10.224	81.1970	90	1	
8	10.224	81.1970	90	1	
9	10.224	81.1970	90	1	
10	10.224	81.1970	90	1	
11	10.224	81.1970	90	1	
12	10.224	81.1970	90	1	
13	10.224	81.1970	90	1	
14	10.224	81.1970	90	1	
15	10.224	81.1970	90	1	
16	10.224	81.1970	90	1	
17	10.224	81.1970	90	1	
18	10.224	81.1970	90	1	
19	10.224	81.1970	90	1	
20	10.224	81.1970	90	1	
21	10.224	81.1970	90	1	
22	10.224	81.1970	90	1	
23	10.224	81.1970	90	1	
24	10.224	81.1970	90	1	
25	10.224	81.1970	90	1	
26	10.224	81.1970	90	1	
27	10.224	81.1970	90	1	
28	10.224	81.1970	90	1	
29	10.224	81.1970	90	1	
30	10.224	81.1970	90	1	
31	10.224	81.1970	90	1	
32	10.224	81.1970	90	1	
33	10.224	81.1970	90	1	
34	10.224	81.1970	90	1	
35	10.224	81.1970	90	1	
36	10.224	81.1970	90	1	
37	10.224	81.1970	90	1	
38	10.224	81.1970	90	1	
39	10.224	81.1970	90	1	
40	10.224	81.1970	90	1	
41	10.224	81.1970	90	1	
42	10.224	81.1970	90	1	
43	10.224	81.1970	90	1	
44	10.224	81.1970	90	1	
45	10.224	81.1970	90	1	
46	10.224	81.1970	90	1	
47	10.224	81.1970	90	1	
48	10.224	81.1970	90	1	
49	10.224	81.1970	90	1	
50	10.224	81.1970	90	1	
51	10.224	81.1970	90	1	
52	10.224	81.1970	90	1	
53	10.224	81.1970	90	1	
54	10.224	81.1970	90	1	
55	10.224	81.1970	90	1	
56	10.224	81.1970	90	1	
57	10.224	81.1970	90	1	
58	10.224	81.1970	90	1	
59	10.224	81.1970	90	1	
60	10.224	81.1970	90	1	
61	10.224	81.1970	90	1	
62	10.224	81.1970	90	1	
63	10.224	81.1970	90	1	
64	10.224	81.1970	90	1	
65	10.224	81.1970	90	1	
66	10.224	81.1970	90	1	
67	10.224	81.1970	90	1	
68	10.224	81.1970	90	1	
69	10.224	81.1970	90	1	
70	10.224	81.1970	90	1	
71	10.224	81.1970	90	1	
72	10.224	81.1970	90	1	
73	10.224	81.1970	90	1	
74	10.224	81.1970	90	1	
75	10.224	81.1970	90	1	
76	10.224	81.1970	90	1	
77	10.224	81.1970	90	1	
78	10.224	81.1970	90	1	
79	10.224	81.1970	90	1	
80	10.224	81.1970	90	1	
81	10.224	81.1970	90	1	
82	10.224	81.1970	90	1	
83	10.224	81.1970	90	1	
84	10.224	81.1970	90	1	
85	10.224	81.1970	90	1	
86	10.224	81.1970	90	1	
87	10.224	81.1970	90	1	
88	10.224	81.1970	90	1	
89	10.224	81.1970	90	1	
90	10.224	81.1970	90	1	
91	10.224	81.1970	90	1	
92	10.224	81.1970	90	1	
93	10.224	81.1970	90	1	
94	10.224	81.1970	90	1	
95	10.224	81.1970	90	1	
96	10.224	81.1970	90	1	
97	10.224	81.1970	90	1	
98	10.224	81.1970	90	1	
99	10.224	81.1970	90	1	
100	10.224	81.1970	90	1	

### Statistical Process Control Data



# AV 871 Off Line AOI Machine

## Specification

### Application

For Inspection

SMT Components and Solder conditions

### Imaging Technology

Camera	Industrial CCD Camera 0.3M / 1.3M-pixel
Field of View	12 x 16mm / 15 x 19mm / 24 x 32mm
Image Resolution	15um / 25um. ( 01005/Metrix 0.4 x 0.2mm)
Lighting	Multi-Layers, Multi Color High Intensity LED

### Software

Interface	Graphical Display
Language	English and Chinese
Analysis Method	Image Based with Algorithm Analysis
Inspection Techniques	Auto Learning with Statistical Modeling Technology
Programming Method	CAD Import, Board Copy or Manual
Character Recognition	Optical Character Recognition (OCR)
Monitor and Reports	Statistical Process Control, 'NG' Statistical Analysis
'NG' Confirmation	Verification Station
Computer	CPU P4, Duo Core, 1GB, 160GB

### System Specification

Inspection Speed	40cm <sup>2</sup> /Sec
Motion Max. Speed	700mm/Sec, Servo Motor
Component Height	Top: 30mm Bottom: 50mm
Electrical Power	220VAC, 1ph, 50/60Hz, 1.0Kw
Operation Environment	Temperature: 10°~ 40°C, Humidity: 30 ~ 80%RH
Optional	Hand Held Barcode Reader, Rework Station

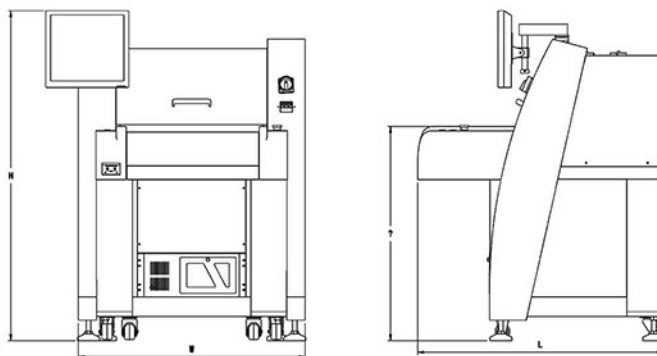
### AV 862 Range of Products

#### M Size

#### L Size

Machine Specification	Standard	Large
PCB Size (mm)	350 x 460mm	560 x 660mm
Machine Size (cm)	110(L)×110(W)×143(H)	142(L)×120(W)×148(H)
Weight (Kgs)	430Kgs	550Kgs

### Machine Dimension



## ASC INTERNATIONAL, INC.

830 TOWER DRIVE, SUITE 100  
MEDINA, MN 55340 USA  
PHONE: (763) 479-6210  
FAX: (763) 479-6206  
USA TOLL FREE: 888-478-2912  
EMAIL: INFO@ASCINTERNATIONAL.COM

The above specification may change without notice.  
© 2009 Mechatronic Systems (S) Pte Ltd. All rights reserved